



Fire  Dex®

FDXL200 STRUCTURAL FIREFIGHTING BOOTS



- **Certified to NFPA 1971 & 1992**
- **Best choice for slip & flame resistance, and liquid & bacterial protection**
- **Top-tier comfort and durability**



Added comfort and protection with shin cushioning and Flame Stop Leather made from the finest U.S. steer.

QUALITY LEATHER

INTEGRATE PULL ON LOOPS

EASY DON & DOFF



Quickly done with wide integrated pull handles, reinforced with an extra layer of leather for longevity and durability, a finished edge helps resist against skin abrasion.

Integrated Pull-On Loops vs. Sewn on Straps

- Unlikely to tear or break off
- Doesn't add bulk under the pant leg
- No snagging or discomfort



FLEX & MOBILITY

Climb and crawl with greater mobility!

Additional flex points at the ankle eliminate pinch points and allow for a larger range of motion.



**SEAMLESS
INTEGRATION**

**Reduces exposure to fireground
contaminants by limiting ride-up.**

**Maintains a seal with any leg dam,
including those containing
particulate barriers.**

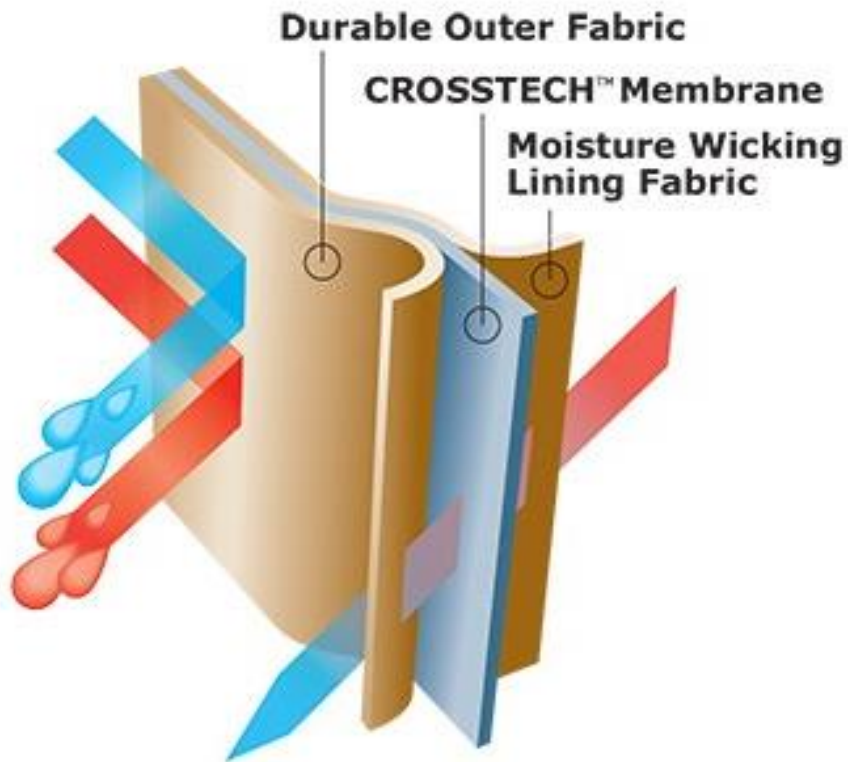
3M™ SCOTCHLITE™ REFLECTIVE TRIM

Firefighter visibility is a critical component of safety and identification.

Be seen in low-light conditions with bright reflective 3M™ Scotchlite™ trim!



ADDED VISIBILITY



You're likely to run into many different liquids (everything from water to blood to gasoline) when you're at an emergency scene.

GORE® CROSSTECH® footwear fabric is the industry leader when it comes to protecting you from water, blood, body fluids, and common ground chemicals, while offering you unparalleled comfort in the form of breathability.



Easily remove boots and reduce the spread of contamination by using the reinforced kick plates.

- **Reinforced to enhance the durability of this vulnerable area**
- **Constructed with Vibram Fire & Ice, the same vulcanized rubber solution as our outsole**

LONG-LASTING SUPPORT



Stay energized during long hours with a naturally-shaped, shock absorbent sole that features toe & heel springs to reduce impact zones.

- Modern cement cup sole design
- No through channels to prevent liquid collection/hydroplaning
- Overlapping lug provides stability on pitched surface
- Raised diamond plate tread for traction on wet or icy ladder rungs
- Heel roll design minimizes foot, knee, leg and back fatigue and discomfort



The FDXL200 incorporates a compression molded toe guard to enhance the durability of this vulnerable area

- Constructed from Vibram Fire & Ice, the same vulcanized rubber solution as our outsole
- Raised ridges provide an extra solution of wear and abrasion in the toe cap

NANO-PRINT SOCK LINER



- Engineered to increase circulation thus decreasing fatigue
- Each sock liner is custom cut to proper boot size
- The face cloth is wickable and anti-microbial
- Removable for laundering and drying

NANO-PRINT SOCK LINER



- **Memory foam, identical to what is found in superior mattress bedding, is integrated between the face cloth and gel points**
- **Will develop a memory of the wearers foot creating a cradling effect for comfort and support**
- **Dual gel infused points placed at the ball and heel of the foot absorb energy from the walking strike and disperses to minimize stress and fatigue**

LENZI PUNCTURE RESISTANT BARRIER

PUNCTURE
RESISTANT BARRIER



Outdated boot designs incorporate a steel puncture plate that runs the length and width of the boot. This prevents flexibility and pitch stabilization.

The FDXL200 incorporates pliable and flexible Lenzi puncture resistance material, which maintains the industry-leading level of flex and comfort.

- Lenzi material does not conduct or transmit heat or cold

As per NFPA 1971 standard, the FDXL200 incorporates a 5-inch-long, $\frac{3}{4}$ -inch-wide, triple ridge steel stability shank.

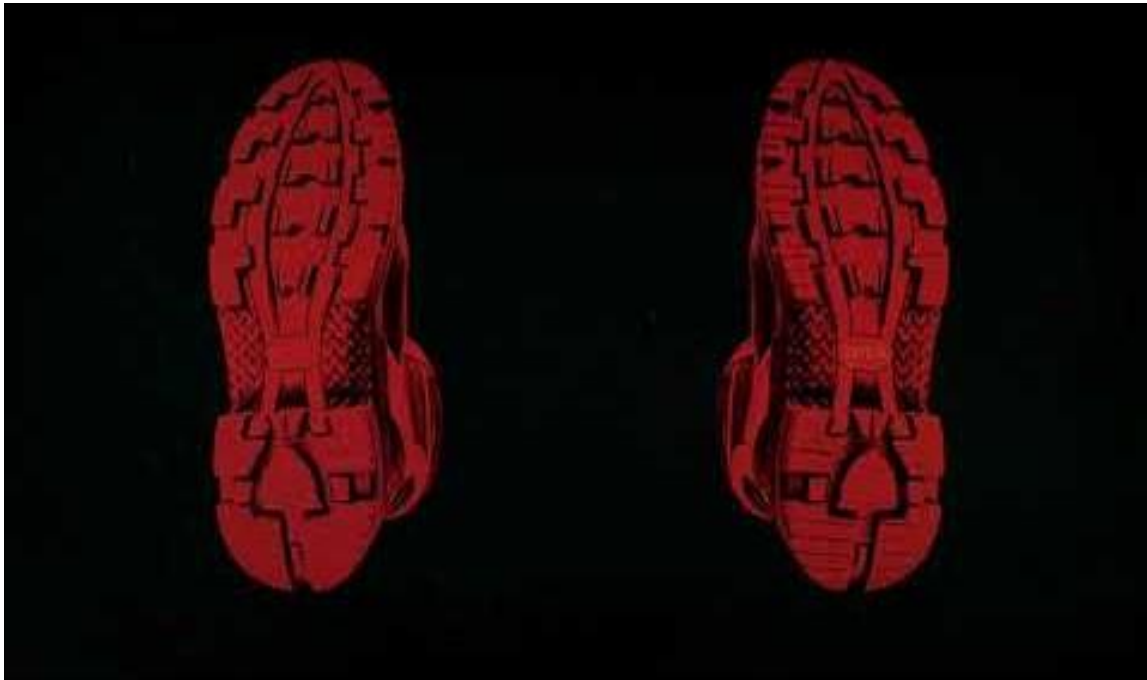


VIBRAM SOLE



Conquer extreme heat and embrace the bitter cold with superior traction from the Vibram® FIRE & ICE sole.

- Developed to maximize abrasion and slip resistance in the most extreme conditions
- Flame retardant and flexible in both hot and cold temperatures



Get more flex out of the FDXL200 Red Leather Structural Firefighting Boot!

This boot will have you feeling light on your toes, but strong on your feet with flexibility that's reminiscent of your running shoes.